



2020 Officers

President - Linda Hoover - 660-238-6242

1st Vice President – Rebecca King - 660-879-4414

2nd Vice President – Chester Lux – 660-553-4718

Event Chairman – Rebecca King - 660-879-4414

Program Chairman– Chester Lux – 660-553-4718

Secretary/Treasurer - Glenda Miller - 660-458-6575

Meetings are held the first Thursday of every month, except August, and December at 6:00 in the Central Bank of Sedalia Annex basement at 403 S. Moniteau, Sedalia, MO.

SVAA MINUTES – October 1, 2020

OPENING

Chester Lux gave a demonstration of his casting process, so there was no business conducted at this meeting.

PRESENT

There were 7 members present and 2 guests.

APPROVAL OF MINUTES

Not applicable.

TREASURER'S REPORT

Not applicable

New Member

No new members.

OLD BUSINESS

Show Sponsors

City Hall Display

The members show *Missouri Skies* is on display at the City Hall from October 1st through December. There are 19 entries in the show. Shirley Horacek's painting *Dawning* won the Mayor's Choice award.

President's Challenge

This year Linda Hoover is challenging us to do something to improve our skills like take a workshop, watch a tutorial on-line or take an on-line class.

Respectfully submitted by Glenda Miller

SVAA Members Website

If you want your artwork included on the SVAA website you will need to send Madge Gressley an email at mgressley@sbcglobal.net with at least 5 pictures of your artwork, a picture of yourself and a short biography. If you have a Facebook page or a website,

please put a link to SVAA's website on it. The name of the website is www.SedaliaVisualArtAssociation.org.

If you already have artwork on the website, do not forget to update it with new work.

Meeting Programs

November 5th – Cameron Cassidy Haynes, digital

Future Events

MEMBER SHOWS & NEWS

Rebecca Limback, Duane Limback and Jerry Ricker all had 3 pieces juried into the Pure Enjoyment Virtual 2020 show <https://www.brewerscience.com/art-show/>. One of Jerry's pieces was featured in the advertising of the show.

Member Websites

Art & Graphic Innovations - art-graphicinnovations.com

Art Deadlines List - artdeadlineslist.com

Art Impressions Art Gallery - artimpressions.net

Bill Brackett - oak-n-iron.com

Janis Burgin - janisburgin.com

Gary Cadwallader - garypaints.com

Madge Gressley - meg-originals.com

Ali K. Halane - alihalanearwork.com

Neil Heimsoth - heimsothfineart.com

Linda Hoover - lindahooverart.com

Matthew Kurz – matthewkurz.gallery

Glenda Miller - millerscaveart.com

Cindy Morris - cynthiacmorris.com

Myrna Ragar - ragar-banners.com & art-bymyrna.com

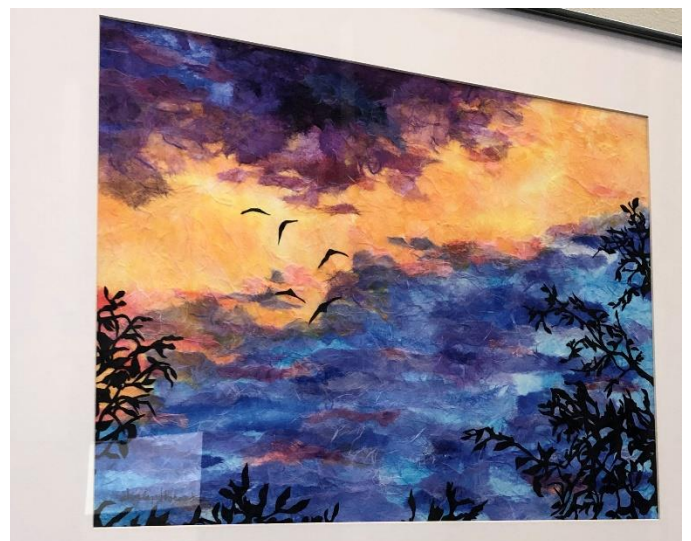
Garnetta Sullivan - sullivancreative.net & artimpressions.net

SVAA - sedaliavisualartassociation.org

MMA – midmissouriartists.webs.com

Feature Artist

Dawning by Shirley
Horacek





Chester is packing the mold with oil-soaked sand while Josh Rhoads is filling the forge with aluminum cans.

A board has already been placed in the center of the mold and the foam artwork was placed on the board, face up. After this side of the mold has been packed with sand it will be flipped and the other side will be filled sand and sprue holes will be created.



Chester is pouring melted aluminum into the mold.



The mold has been cooled awhile and Chester has removed the outside of the mold and is now removing the sand in layers as they cool. You can see the sprues sticking up out of the sand.



Chester is removing chunks of waste material from the bottom of crucible in the forge after the pour.



This is the piece after cooling and removing from the mold. In the shadows and at the top of the art piece you can see the sprues that will be removed.